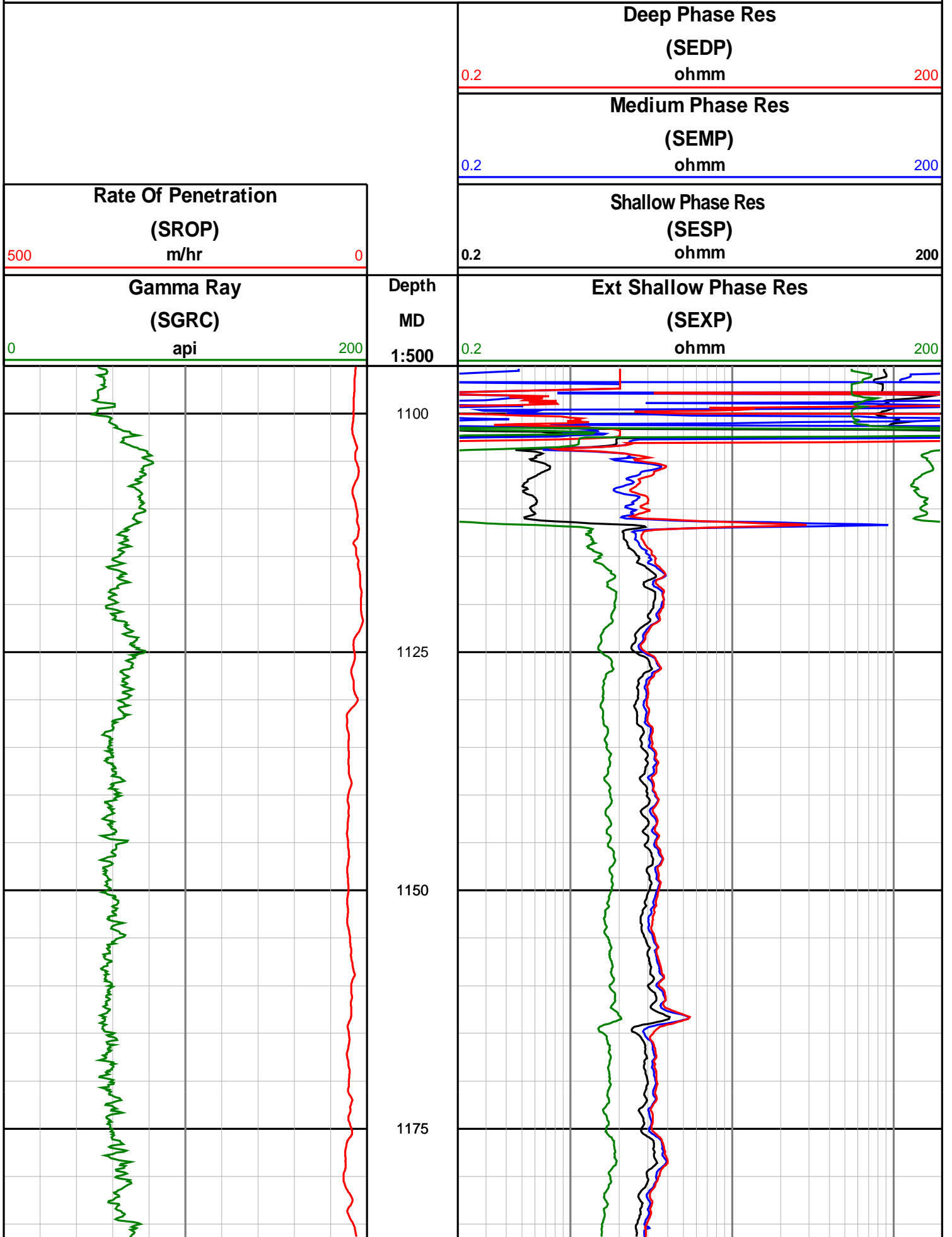
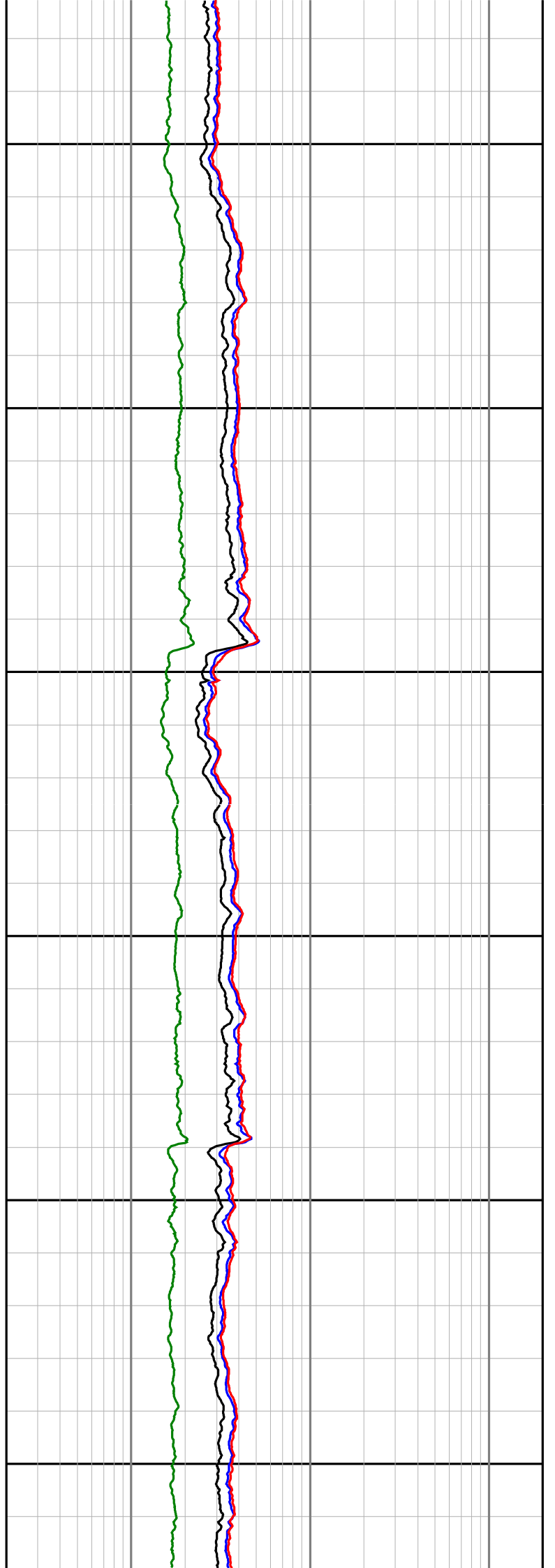
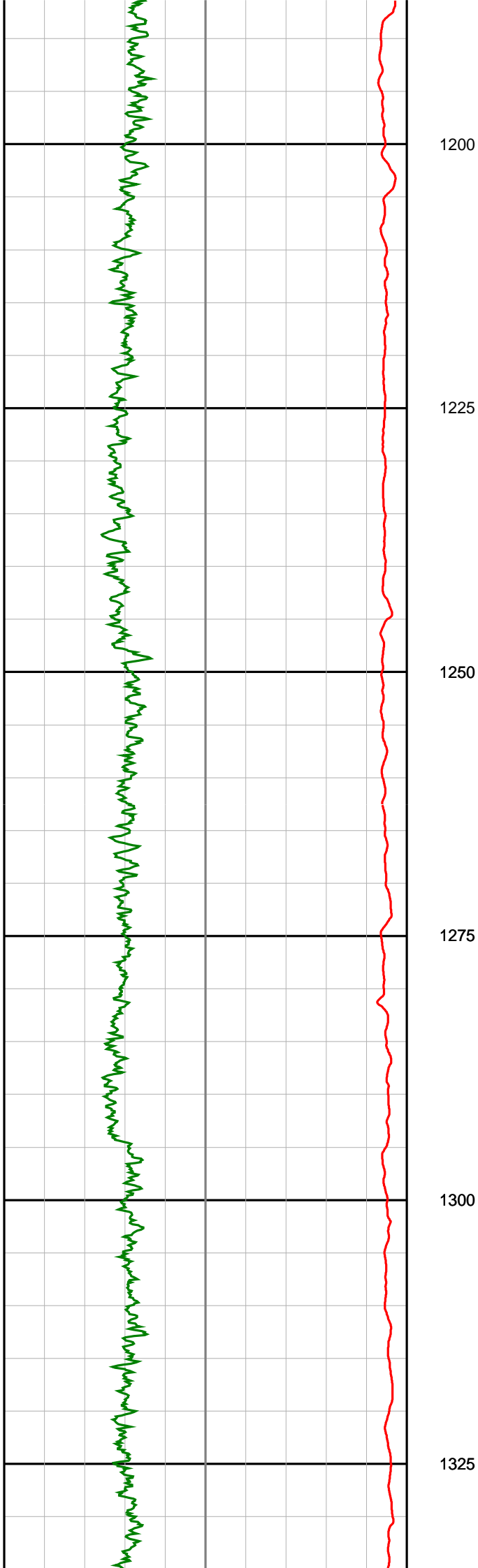


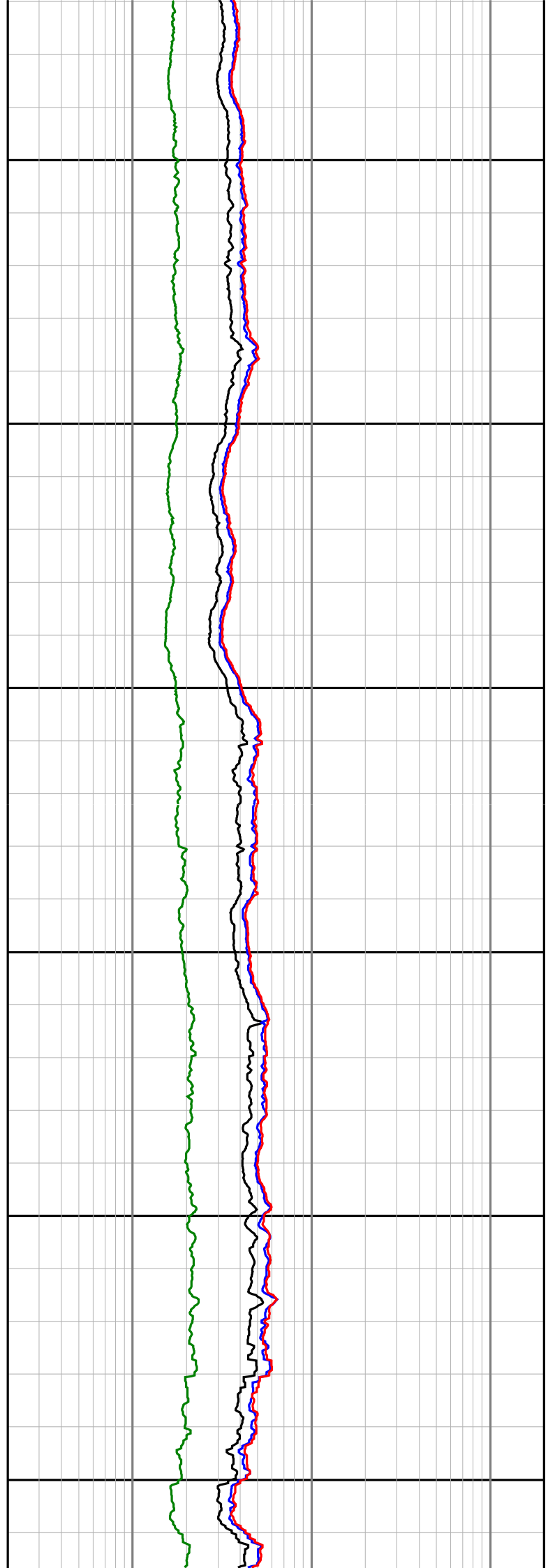
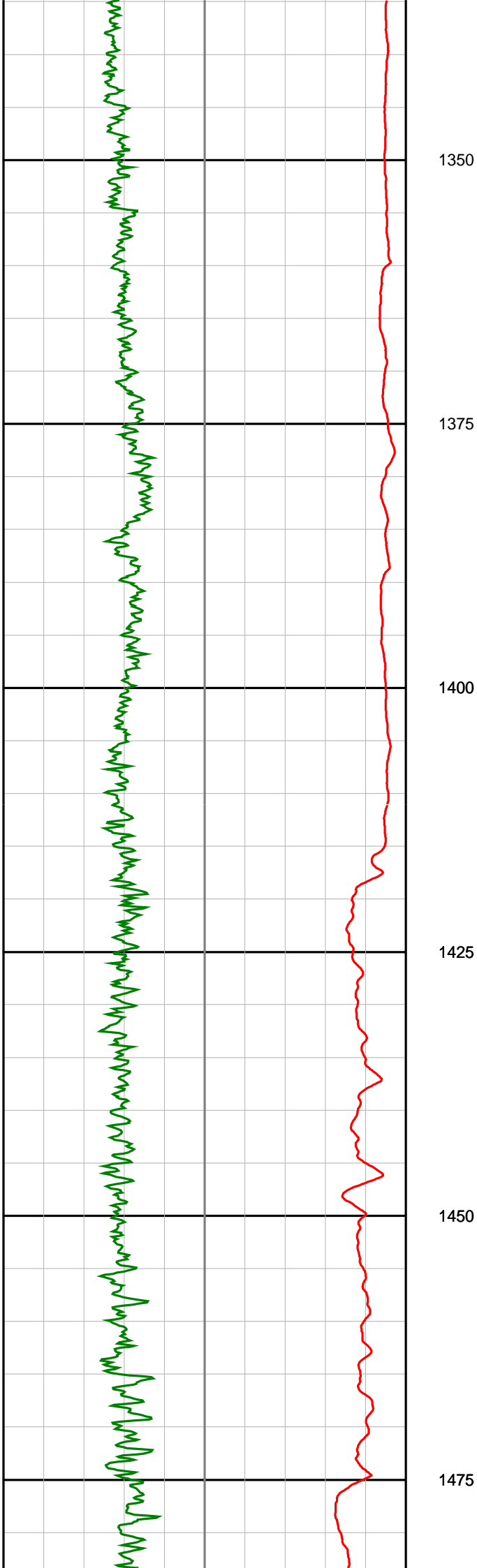
# Anzon Australia Ltd

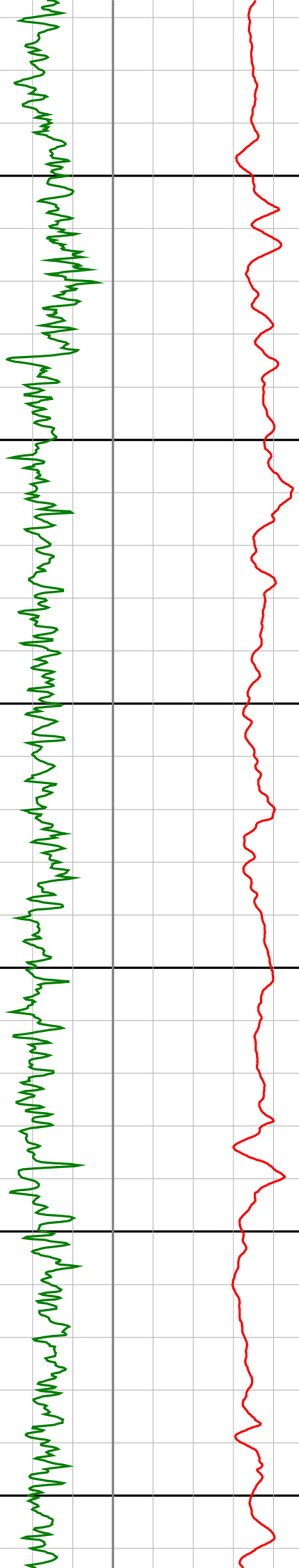
## Basker-3

Recorded LWD Log (Permanent Datum - LAT)

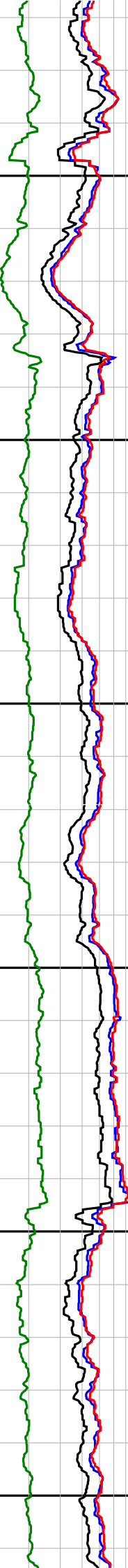


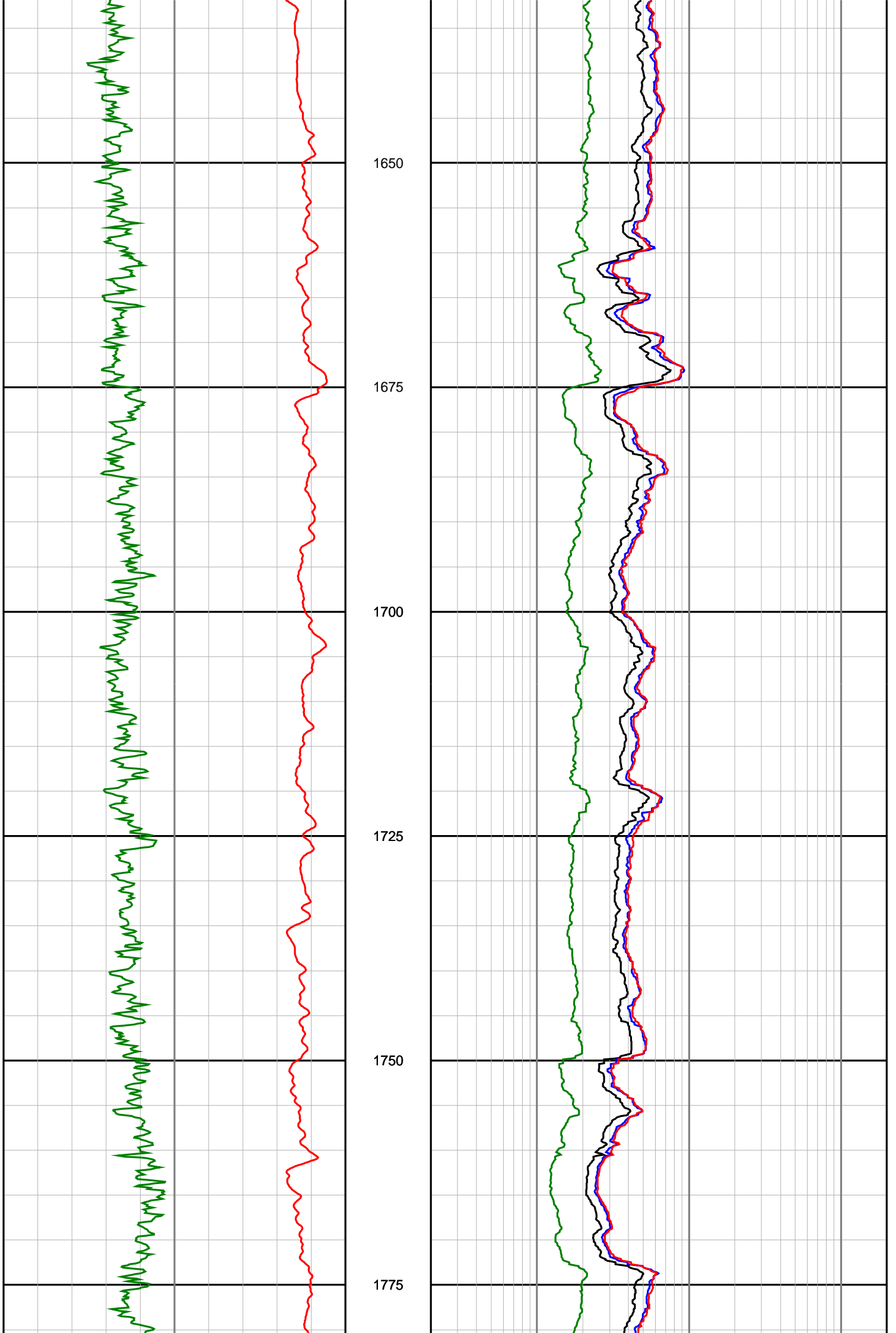


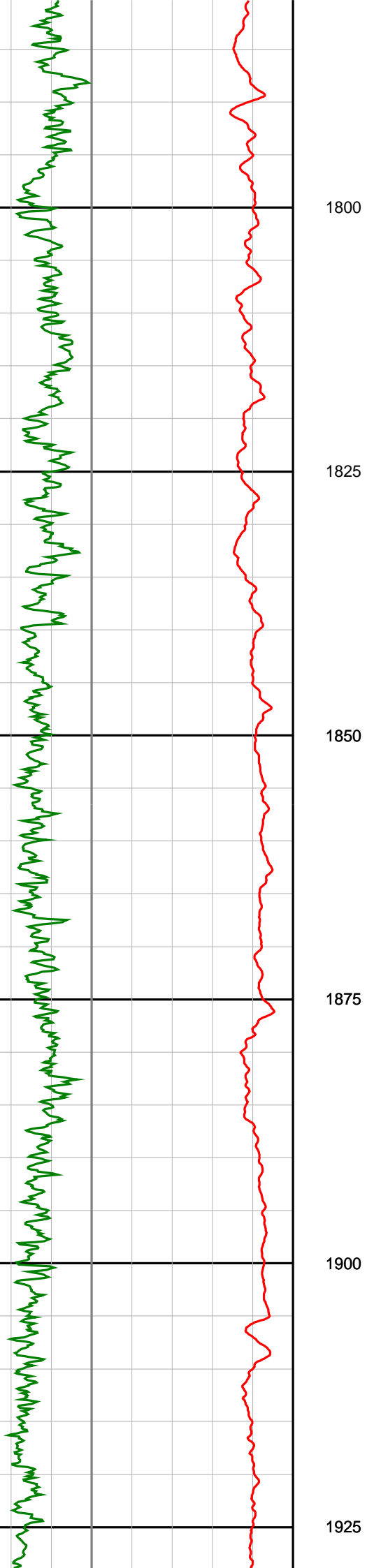




1500  
1525  
1550  
1575  
1600  
1625







1800

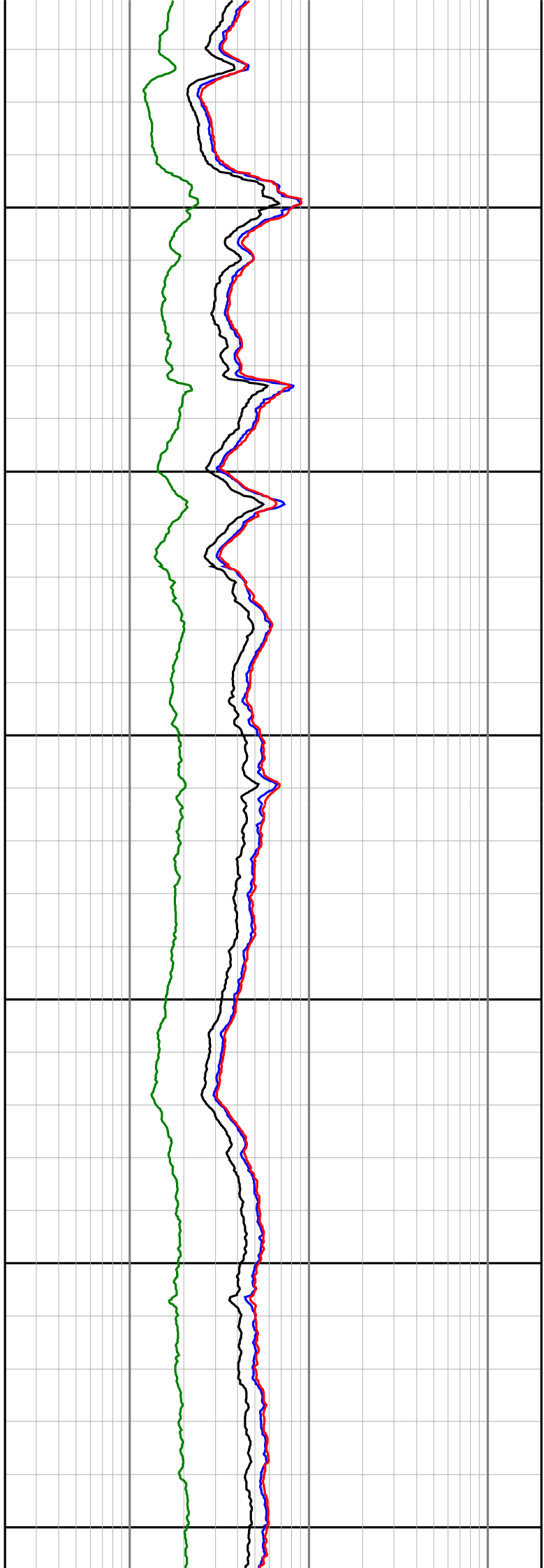
1825

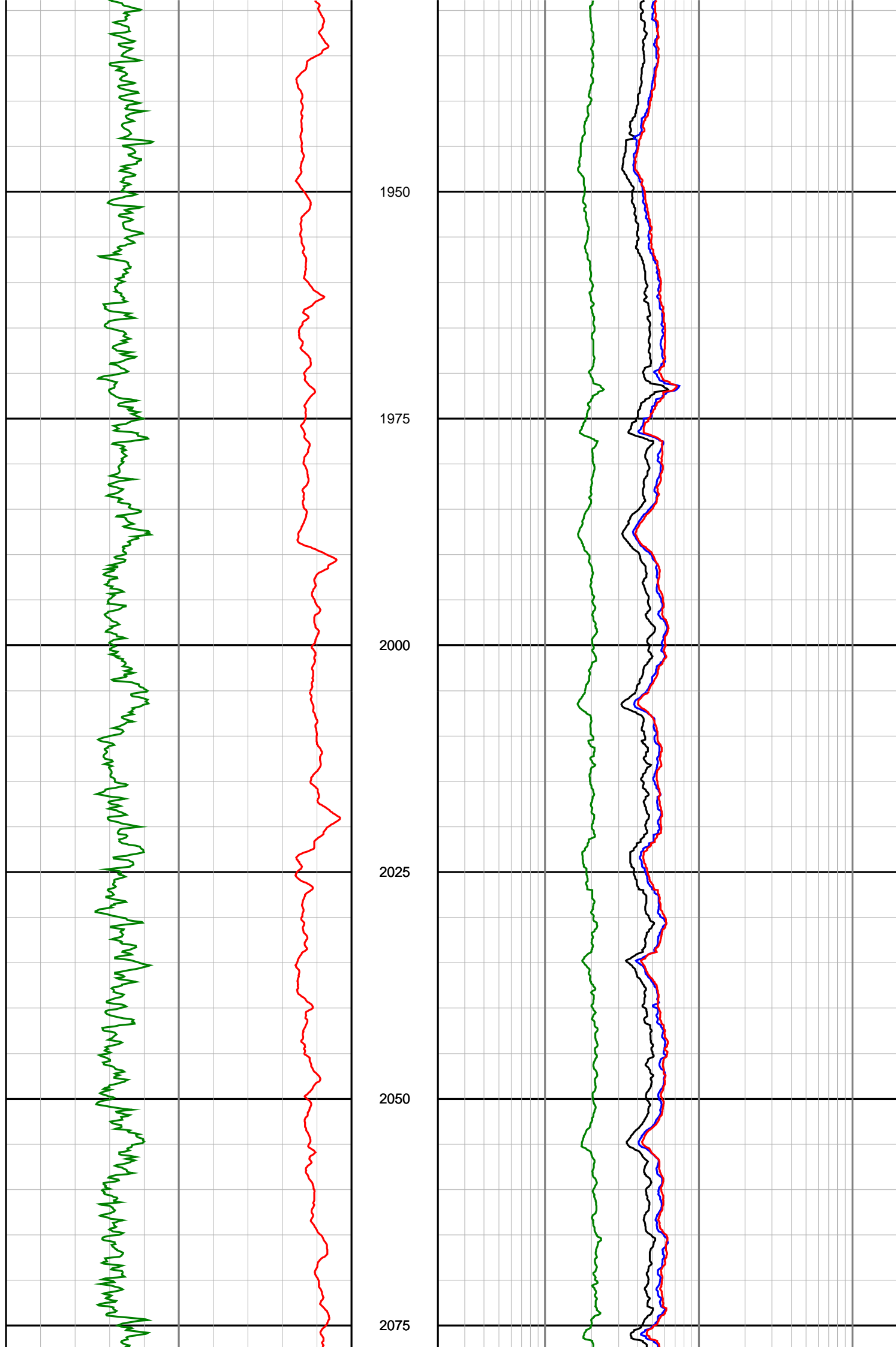
1850

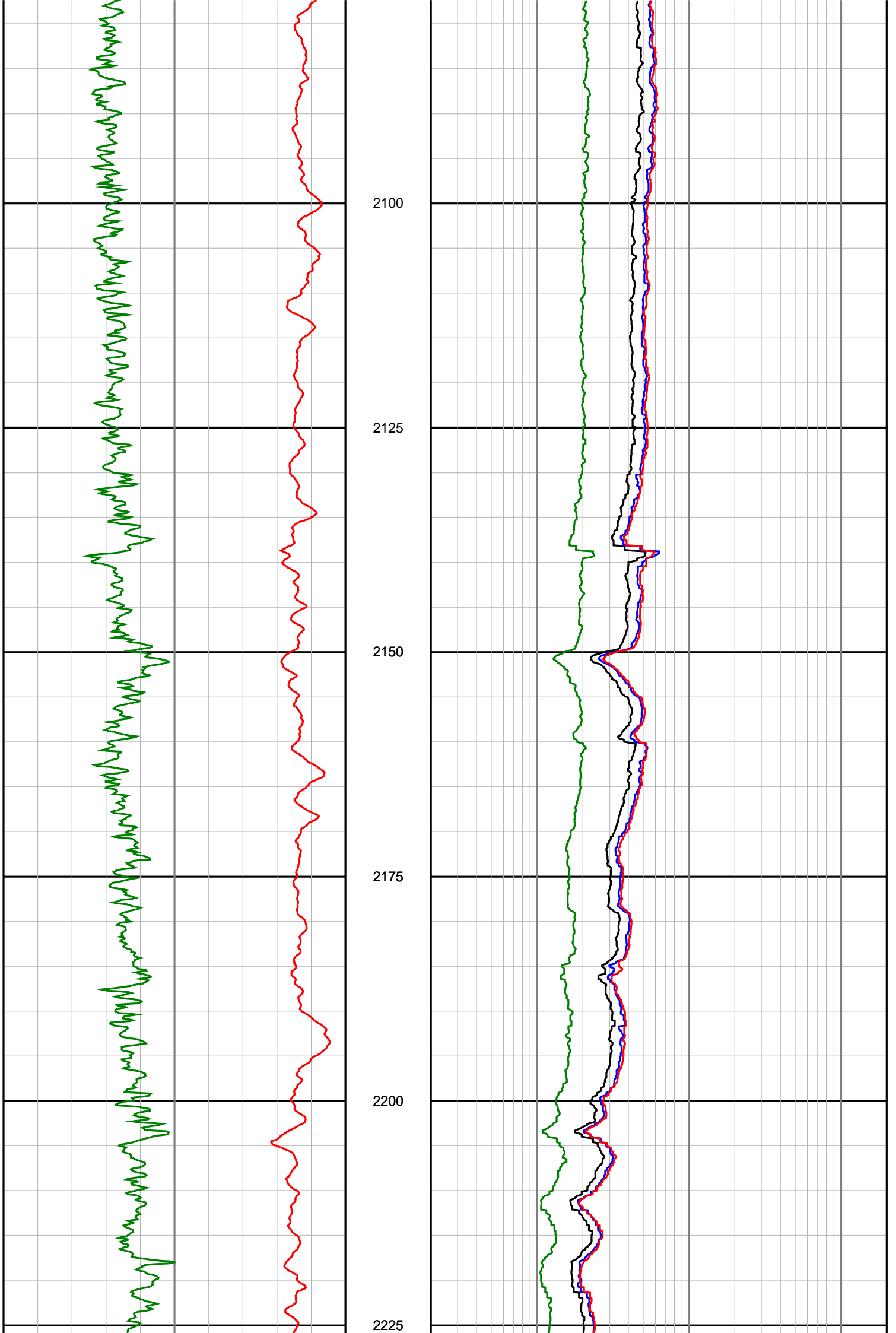
1875

1900

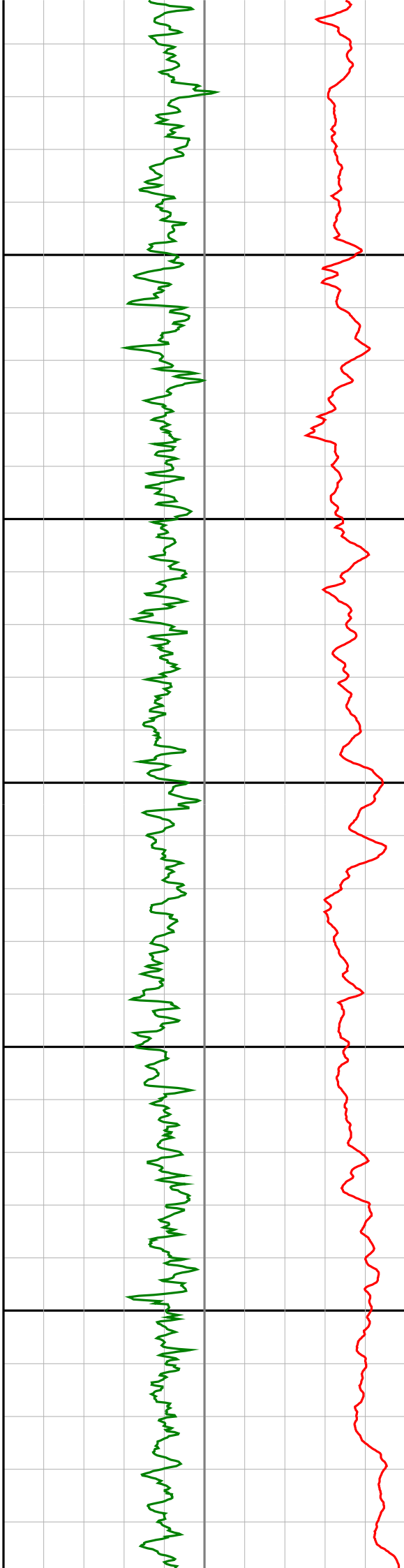
1925











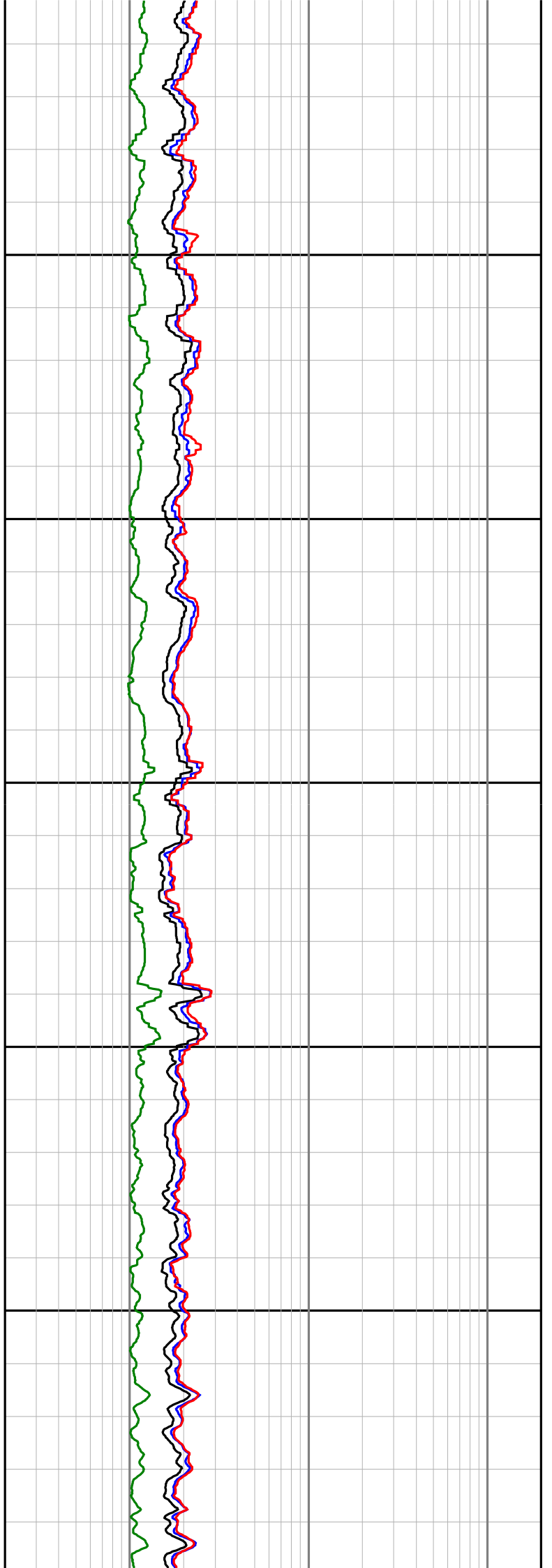
2250

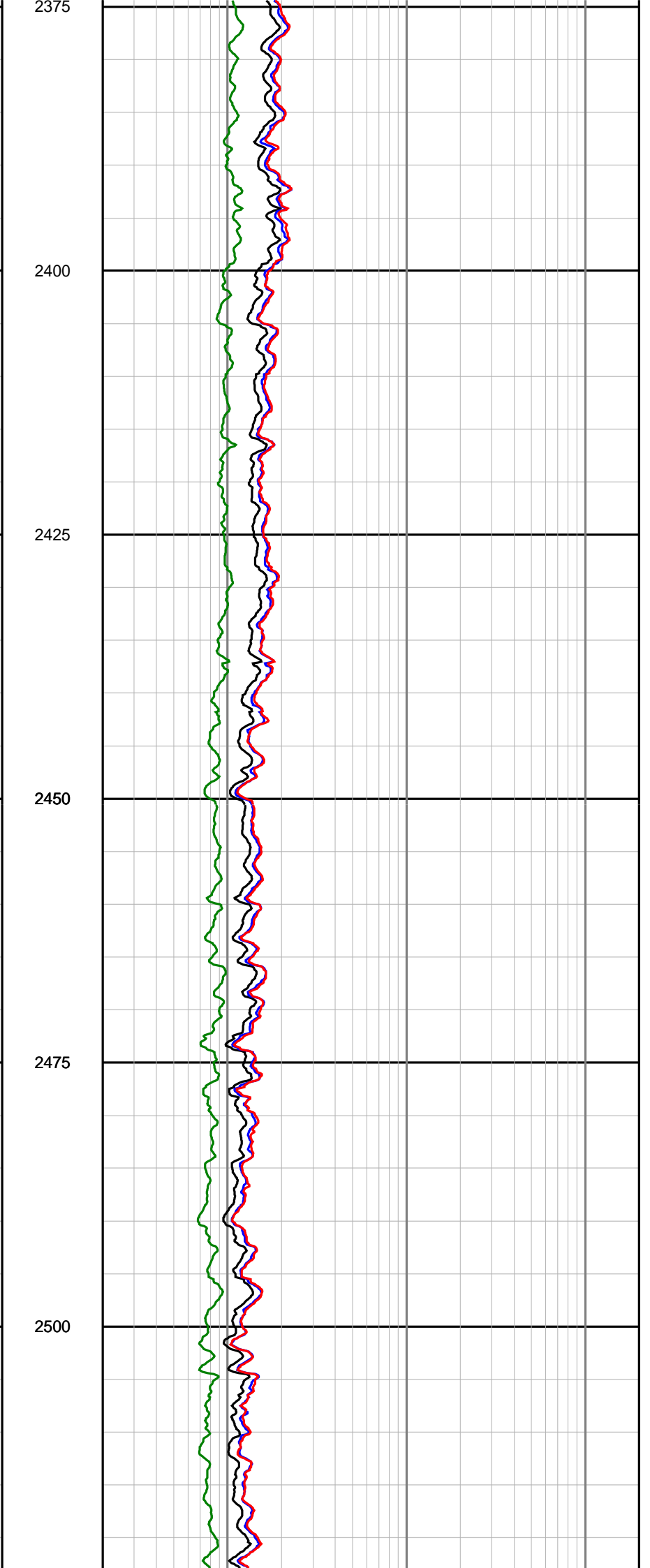
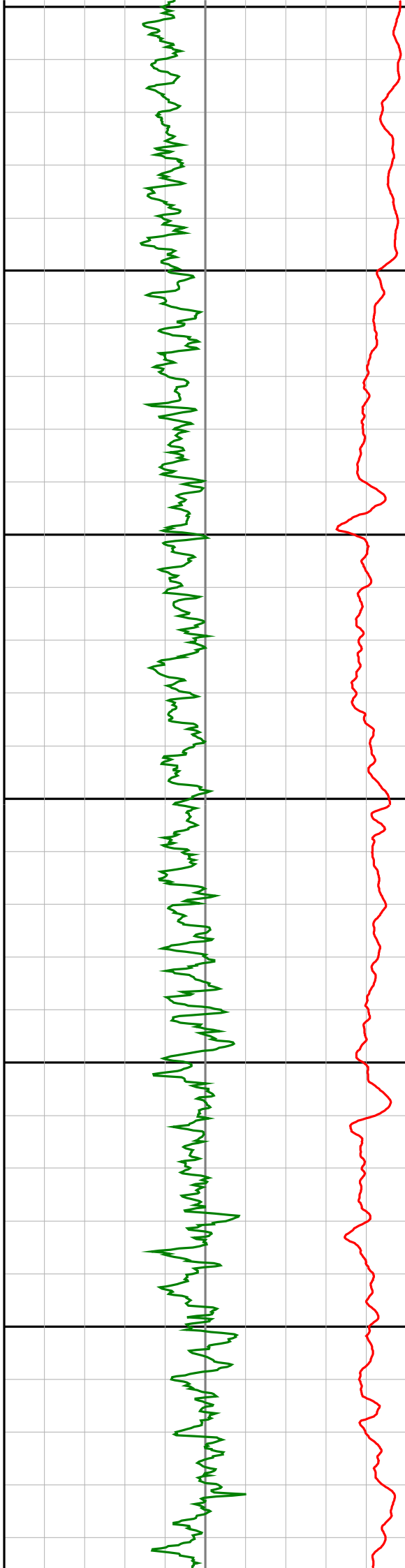
2275

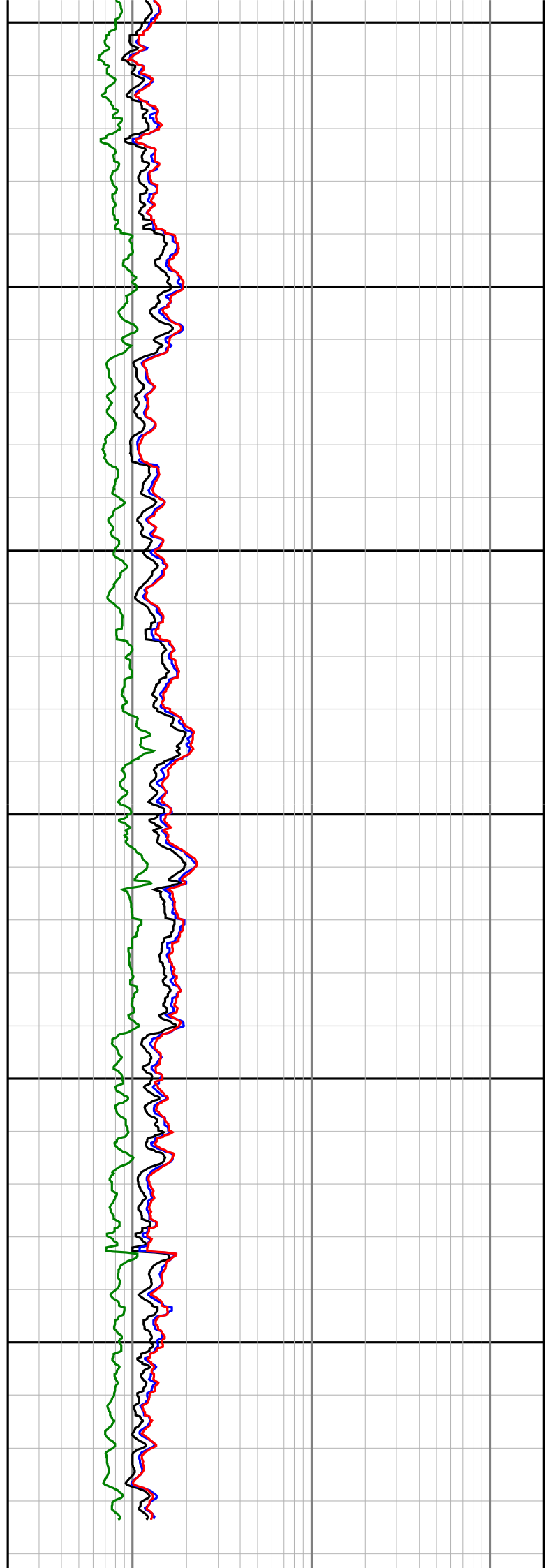
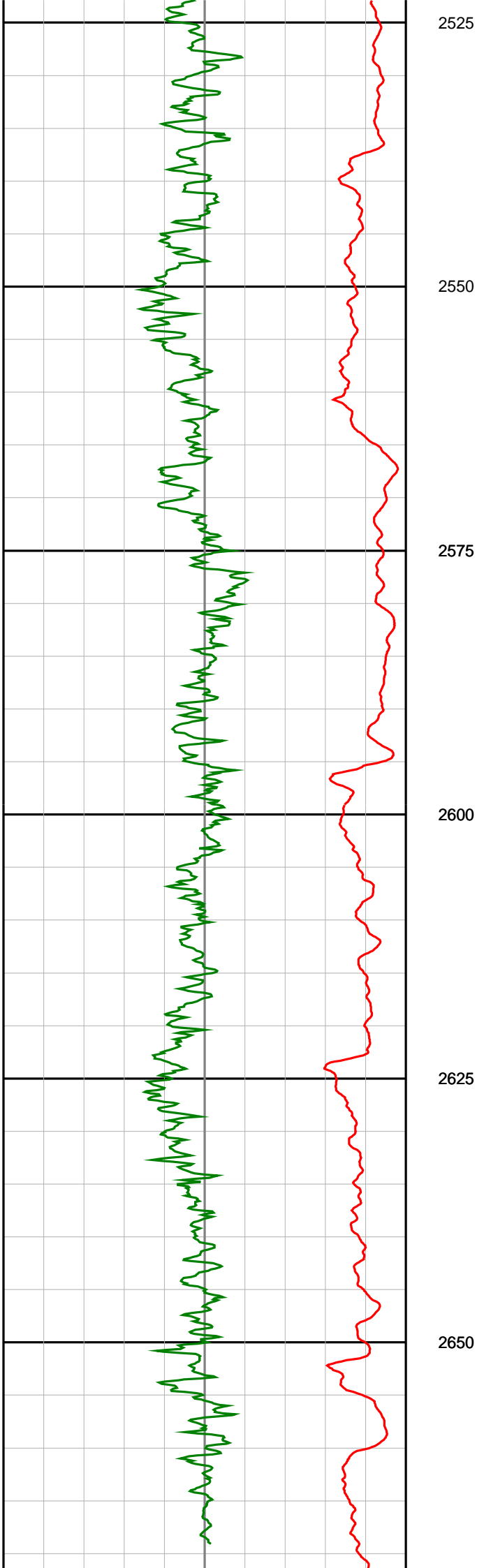
2300

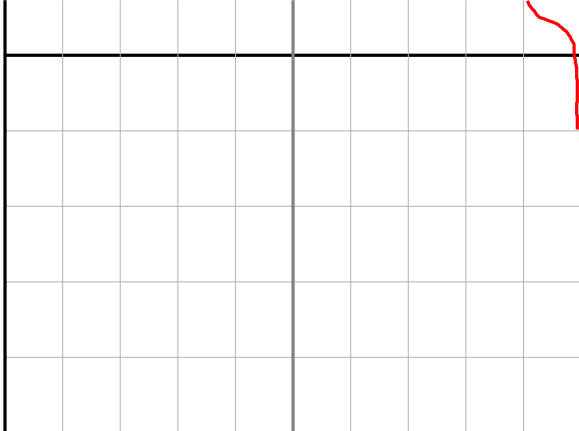
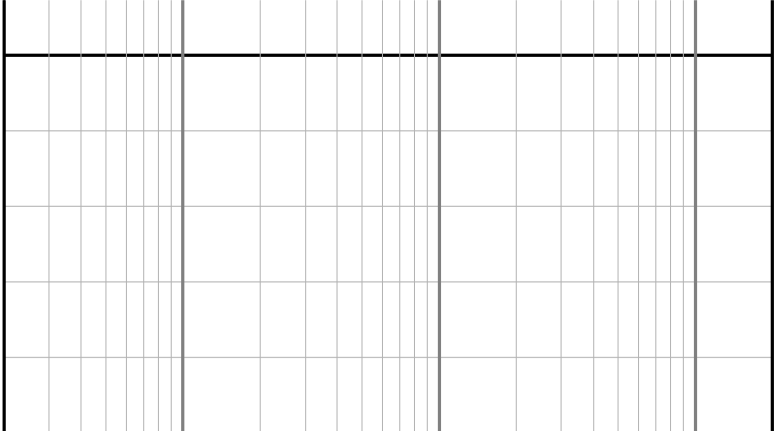
2325

2350







	<p>2675</p>	
<p><b>Gamma Ray (SGRC)</b> api</p> <p>0 <span style="float: right;">200</span></p>	<p>Depth MD 1:500</p>	<p><b>Ext Shallow Phase Res (SEXP)</b> ohmm</p> <p>0.2 <span style="float: right;">200</span></p>
<p><b>Rate Of Penetration (SROP)</b> m/hr</p> <p>500 <span style="float: right;">0</span></p>		<p><b>Shallow Phase Res (SESP)</b> ohmm</p> <p>0.2 <span style="float: right;">200</span></p>
		<p><b>Medium Phase Res (SEMP)</b> ohmm</p> <p>0.2 <span style="float: right;">200</span></p>
		<p><b>Deep Phase Res (SEDP)</b> ohmm</p> <p>0.2 <span style="float: right;">200</span></p>